



# *1Disk.com Quick-Start Installation Guide*

---

## **Getting Started**

This guide provides the minimal information needed to install 1Disk.com and configure your Windows 2000 server to implement the system's basic functionality.

Three tasks are required to setup 1Disk.com:

- Install the 1Disk.com software
- Configure the SMTP Virtual Server to access 1Disk.com
- Create and submit an electronic certificate for SSL web support

### **Requirements:**

- Windows 2000 Server or Advanced Server (Service Pack 2 recommended)
- Windows Internet Information Server. (IIS is installed by default)
- SMTP Server
- Microsoft SQL Server Installed
- CD-ROM drive
- 250 MB RAM (Minimum) 500 MB recommended
- 1GB (Minimum) available disk space

Once 1Disk.com is installed, you will be required to create an electronic certificate that must be signed by 1Vision Software, Inc., publisher of 1Disk.com, or a third-party signing service. (Third-party signing process is not covered in this quick-start guide.) Once the certificate is returned to you and processed, full functionality of 1Disk.com will be enabled.

#### Information Required for Certificate Creation

- Domain name of the server on which 1Disk.com is to be installed
- IP Address of the server

---

### *Installing 1Disk.com*

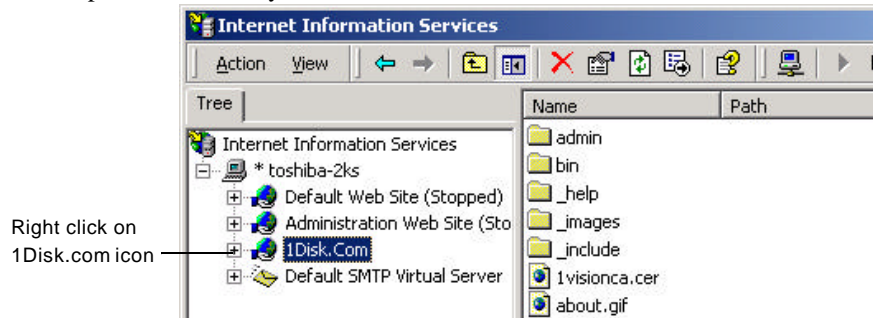
1. Insert the 1Disk.com installation CD in your CD-ROM drive.
2. If the installation process does not start automatically, view the contents of the installation CD and manually run Install.exe.
3. The 1Disk.com Server Setup Wizard appears. Click **Next** to proceed.
4. The 1Disk.com software license agreement appears. Read the agreement and click on the radio button next to **I accept the terms of the license agreement** and click on **Next** to continue.
5. In the Setup Type dialog box, select to either accept the default set of features and file locations by clicking on **Complete** installation. If you are an advanced user, you can choose the features and specify directory locations by selecting **Custom**. Click on **Next** to continue with your selection.
6. When satisfied with all selections, click on **Install**. The installation wizard will inform you when the installation process is complete.

---

### *Create a Certificate for SSL Activation*

A verified electronic certificate is required to activate the SSL Application for your browser when using 1Disk.com. The following steps describe how to create and process a certificate.

1. Click on the Windows Internet Service Manager Icon.
2. Expand the directory to see 1Disk.com.



3. Right-click on the 1Disk.com listing and select **Properties** from the menu.
4. Select the **Directory Server** tab and click on the **Server Certificate** button.
5. A setup wizard appears. Click **Next**.
6. Select or perform these options in the following order:
  - Select **Create a new certificate**
  - Select **Prepare the request now, but send it later**
  - Enter the Name a bit length (or accept default)
  - Enter the exact name of your DNS server name for Common Name
  - When prompted, name and select a destination for a the certificate file.
  - Attach the certificate file to an e-mail requesting verification and send it to admin@1disk.com

The file will be signed by 1Vision Software, Inc. and returned as an e-mail attachment.

- Once received, copy the certificate file to a directory on the server.
- Repeat steps 1-5 in this section.
- When opening the Server Certificate section of the wizard, select **Process the pending request and install the certificate**. Select **Next**.

The Secure Socket Link (SSL) function of your browser is now enabled.

---

### *Grant Access to 1Disk.com*

Access must be granted to 1Vision Software's 1Disk.com server to handle such functions as e-mail, password administration, and customer invoicing.

1. Click on the Windows Internet Service Manager Icon.
2. Expand the directory to see the Default SMTP Virtual Server.
3. Right click on the icon and select **Properties** from the menu and select the Access tab.
4. Under Relay restrictions, click on the **Relay** button.
5. In the area provided, enter the following address: 127.0.0.1.  
This is the address to the 1Disk.com server at 1Vision Software that will relay pertinent networking information to your server.

#### **Next Steps**

After completing the steps of this installation guide, your 1Disk.com system is ready. Before operation, it is recommended that you complete the following tasks. Page references provided refer to your *1Disk.com IT User's Guide*.

- Start 1Disk.com and log in as the System Administrator. (Default log in: root. There is no password. Set up a new password immediately.)
- Set up a billing plan. (Page 7)
- Set up content information for your e-mail reply. (Mailing List on Page 28.)